

NEW

CG750

REMOTE-CONTROLLED BRUSH CUTTER

Heavy-Duty Design with Easy Maintenance Access!!



CG750

REMOTE-CONTROLLED
BRUSH CUTTER

75hp Diesel Engine

Cutting Width 72.8in

Cutting Height 1.1/1.9/3.1in

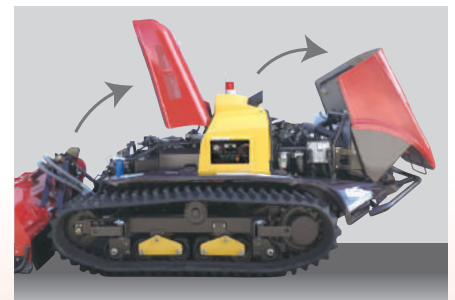


75hp Kubota Diesel
(EPA Final Tier 4)



**Simple Cutter Head
Maintenance**

The top covers on the cutter head allow quick, ergonomic access.



**Fully-opening
Covers**

Gas-assisted cover lifts for fast inspection and maintenance.

GANYCOM

Key Features



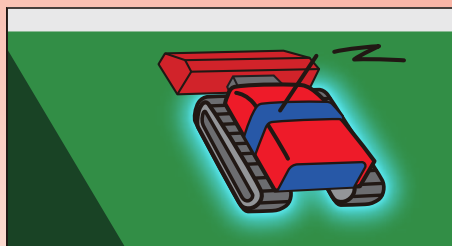
Multi-function Display shows RPMs, fuel, service alerts, and error logs.



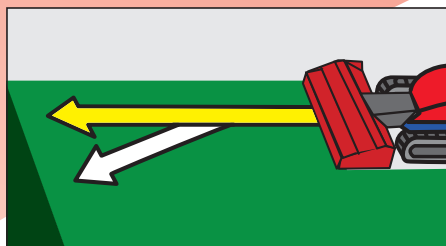
Tracks offer superior traction and hillside stability.



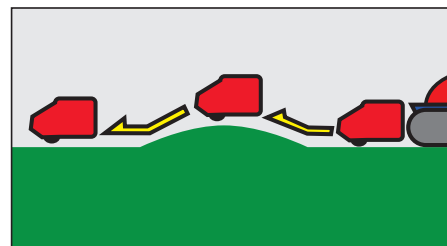
Innovative deck design makes clearing wrapped vines easier.



Brake auto-engages when stopped.



Automatic Drift Correction



Flail Head with Floating Deck

Operates on slopes up to 40°

300ft range
remote-control



Specifications

CG750						
Dimensions	Machine Mass	6614lbs (3000kg)	Controller	Control Channel	429.2500~429.7375MHz	
	Overall Length	178.7in (4540mm)	CG750HM (Flail Mower)			
	Overall Width	80.3in (2040mm)				
	Overall Height	58.27in (1480mm)				
	Track Gauge	57.1in (1450mm)				
	Min. Ground Clearance	7.9in (200mm)				
Average Ground Pressure	3.45PSI (23.8kPa)					
Engine	Model	Kubota V3800-CR-TE4	Cutting Implement	Machine Mass	992lbs (450kg)	
	Rated Output	74.2ps (54.6kw) / rpm		Attachment	3-Points Hitch (Automatic)	
	Starter System	Electric		Overall Length	48.0in (1220mm)	
	Fuel / Tank Capacity	Diesel / 26.42gal (100L)		Overall Width	80.3in (2040mm)	
Drivetrain	Speed	0~3.7mph (0~6.0kmh)		Overall Height	34.6in (880mm)	
	Static Stability Angle	Left		60 degrees	Cutting Type	Flail (Hammer Knife)
		Right		60 degrees	Cutting Width	72.8in (1850mm)
				Number of Flails	112	
				Drive System	Hydraulic pump and motor	
				Cutting Speed	2600rpm	
			Cutting Height	1.2in, 2.0in, 3.1in (30mm, 50mm, 80mm) +Position control		



Canycom USA, Inc.

425-450-0381
info@canycomsales.com
https://canycomsales.com

